

# REC Data Specification and UK Link File Formats



5/11/2019

## Data Item Catalogue

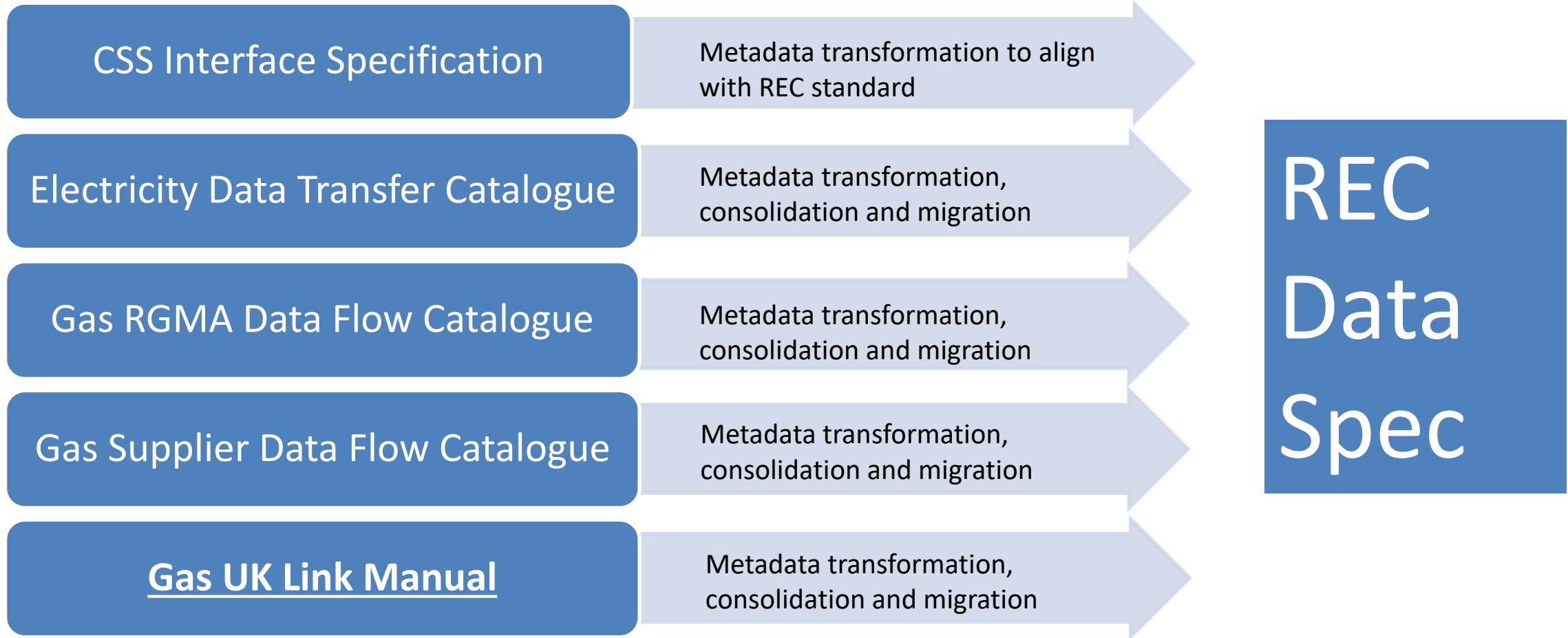
- Containing details of all the data items that are sent and received between Market Participants, Service Providers and Third Parties (such as Price Comparison Websites).

## Message Catalogue

- Containing the list of all messages sent/received between Market Participants, Service Providers and Third Parties. This will include the source and destination of each message, details of the data items contained within the message and the message structure.

## E2E Process and ISDs

- The graphical representation of the End to End (E2E) switching process (currently presented in ABACUS) and any other process defined within the REC, together with ISDs which illustrate the source, destination, flow and sequencing of messaging between parties.



Are there any IGT UNC specific data items or flows that should also be considered?

- Metadata currently held in the electricity DTC and SPAA DFCs will migrate into a single REC data catalogue.
- Where possible, duplicate data items will be consolidated e.g. a single definition of postcode rather than separate gas and electricity data items.
- Additional information populated to reflect the metadata standard e.g. data master and metadata owner.
- User interface developed to enable the metadata held by the Code Manager to be provided to market participants and service providers e.g. online access

- A REC Metadata Standard is being developed which will define the data attributes used to record REC data e.g. data item definition, metadata owner, data type.
- This will reflect the content of existing metadata registers, plus additional attributes required for the new CSS arrangements.
- In addition the meta data will support the creation of interaction sequence diagrams and other market process related artefacts, i.e. enable the representation of the flow of messages between parties to support specific use cases.

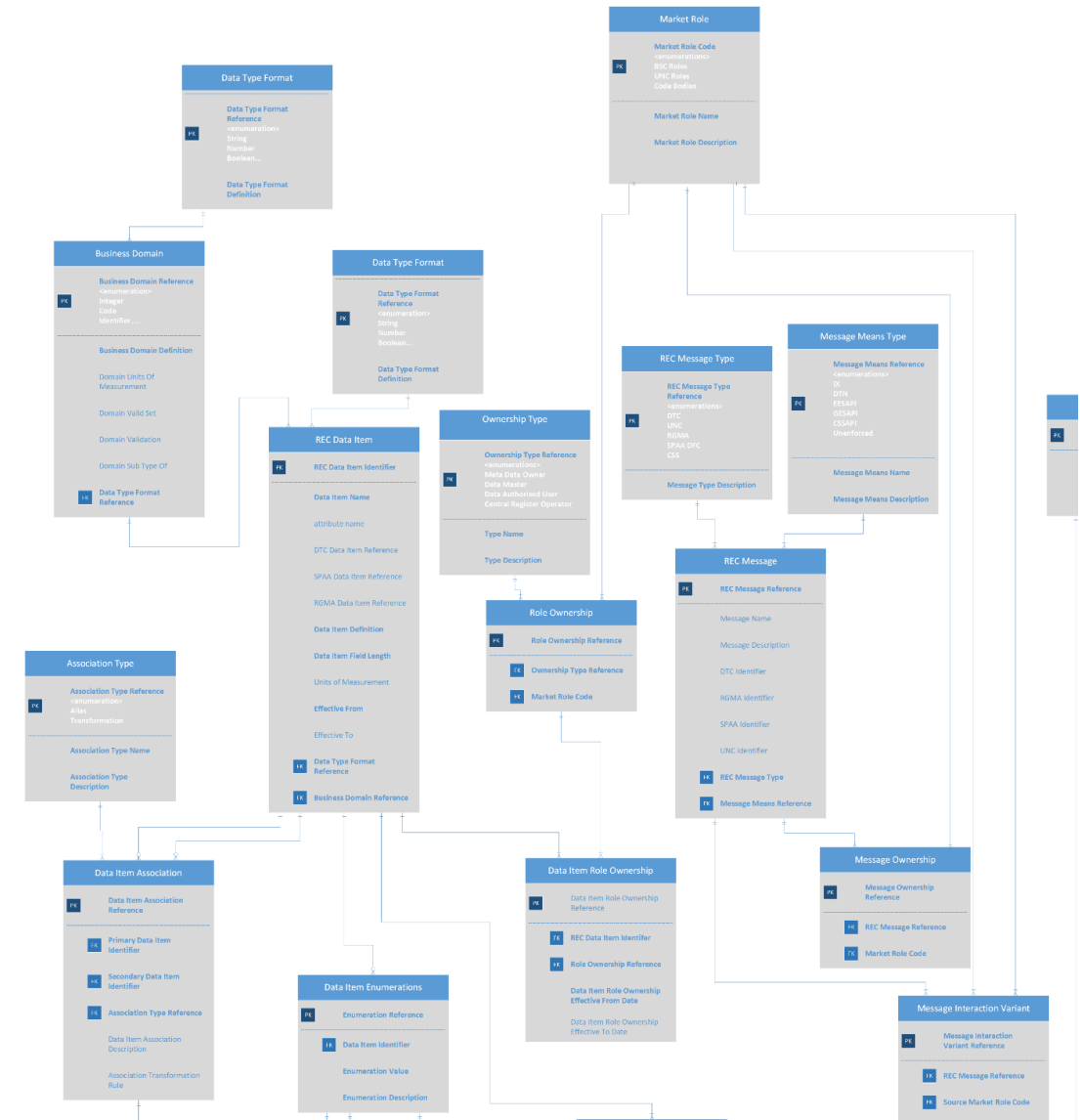
# Overview of the REC Architecture Repository Metadata Model

- Model is a work in progress and will be presented at the next RDUG in detail.
- The model supports all of the architectural components referenced as being within the REC Technical Specification.
- Key building block for the digitalisation of the REC

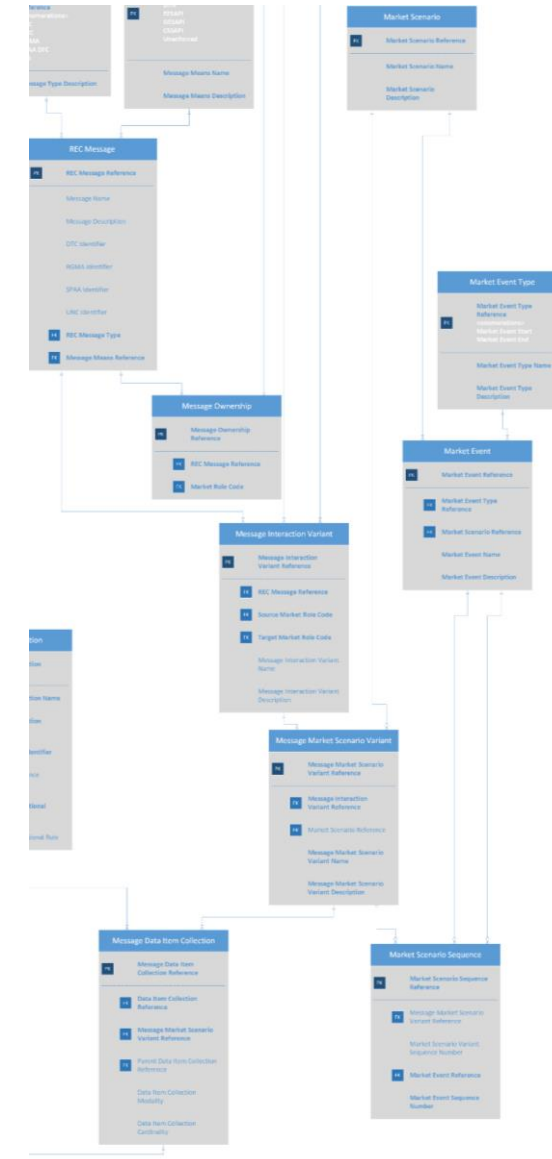


# Data Items and messages / files

- Will enable common model for DTC, CSS, RGMA, SPAA and UNC.
- Will contain existing elements of those formats.
- Will define code master, data master and master central register [if appropriate]
- Messages between parties will be defined and variants of messages [e.g. different instances of the ONUPD or D0148]
- Digitisation of content currently held only in documented explanatory text (e.g. annex C of the DTC).

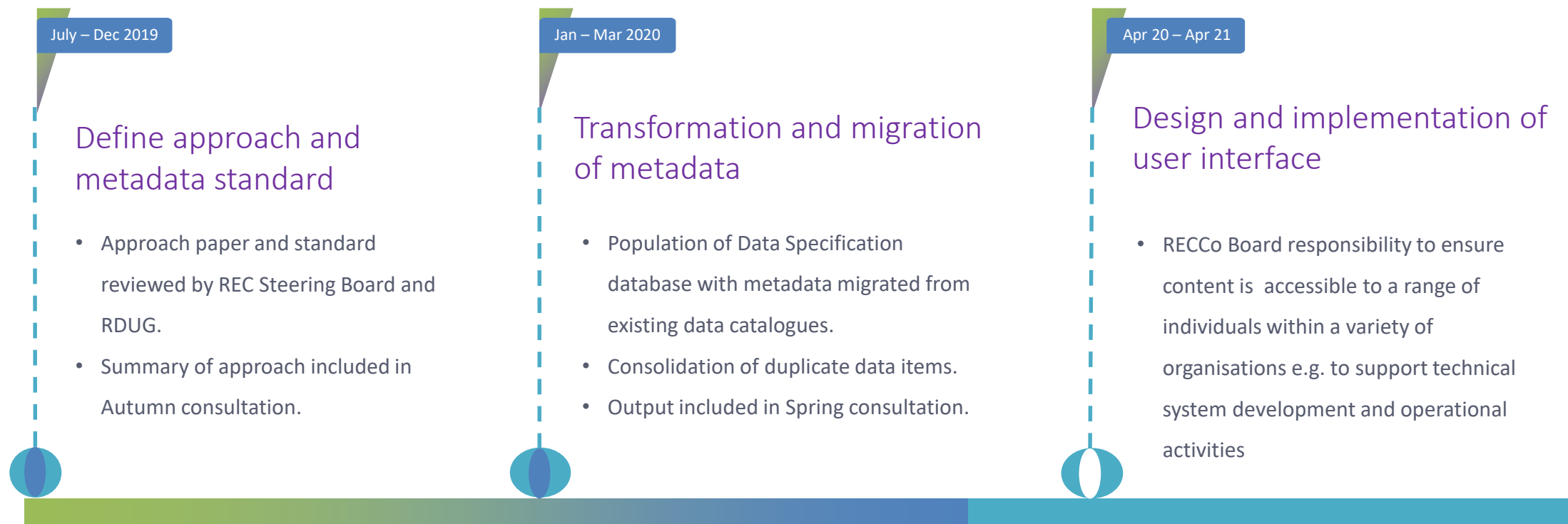


- Will enable common model for REC message sequence interactions and business processes.
- Can be based on specific use cases /market events.
- Additional items to be added to the model:
  - Configuration Management
  - Business Rules (if additional to data item or message object classes)





- REC to host the Data Specification, however control over the contents will sit with the Metadata Owner.
- Metadata Owners to include REC, BSC, DCUSA, UNC and potentially the iGT UNC.
- For example - changes to data flows used for BSC processes will be considered under the BSC change process and outcome reflected in REC Data Specification.
- The lead code will be responsible for ensuring all impacted parties are engaged.
- Cross Code Steering Group established to oversee the process



- Do you agree with the proposed approach to the migration of metadata from existing data catalogues?
- Do you agree that metadata relating to UK Link messages should be hosted in the REC Data Specification?
- Are there any IGT data items or data flows that are not in the UK Link File Formats that should also be included within scope?
- Do you agree with the proposed timelines?

**Our core purpose is to ensure that all consumers can get good value and service from the energy market. In support of this we favour market solutions where practical, incentive regulation for monopolies and an approach that seeks to enable innovation and beneficial change whilst protecting consumers.**

**We will ensure that Ofgem will operate as an efficient organisation, driven by skilled and empowered staff, that will act quickly, predictably and effectively in the consumer interest, based on independent and transparent insight into consumers' experiences and the operation of energy systems and markets.**