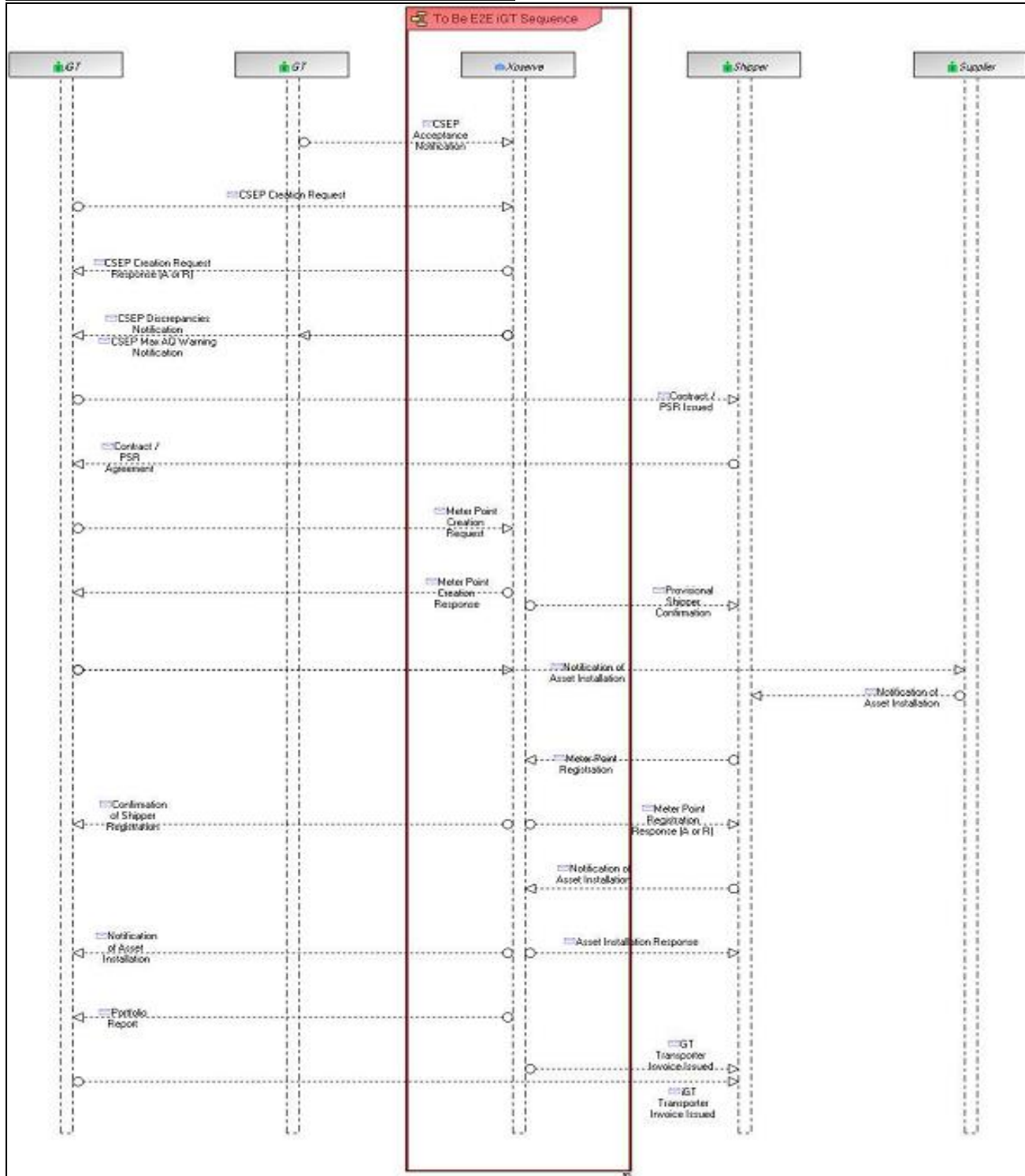


### iGT Meter Point Creation Process under SSP

Issue	First Shipper registration on Xoserve system may not be the Elected Shipper
Date of meeting	Tuesday 2 <sup>nd</sup> February 2016
Attendees	iGT UNC Mod Workgroup representatives

#### iGT Meter Point Creation Process – Industry flows



## Table of Arrangements

Organisation	Initial Registration	Ongoing Registration	Transportation Charges	Back Billing capability	Within Xoserve Portfolio
iGT	<ul style="list-style-type: none"> <li>PSR 'registers the first Shipper'</li> <li>Notify Xoserve of PSR Shipper</li> </ul>	<ul style="list-style-type: none"> <li>File Flow from incoming Shipper</li> </ul>	<ul style="list-style-type: none"> <li>Meter Installation Date</li> </ul>	?	<ul style="list-style-type: none"> <li>Yes – as Elected Shipper initially, then recorded against the Registered Shipper</li> </ul>
Shipper	<ul style="list-style-type: none"> <li>Agrees PSR</li> <li>Receives AES file from Xoserve</li> <li>Arranges Meter Installation</li> <li>Receive asset info</li> <li>Submits confirmation file &amp; asset details to Supply Point Register</li> </ul>	<ul style="list-style-type: none"> <li>File Flow submitted to GT</li> </ul>	<ul style="list-style-type: none"> <li>Meter installation date for iGT charges</li> <li>Confirmation date for GT charges</li> </ul>	<i>To Meter Installation date where Shipper responsible for meter install</i>	<ul style="list-style-type: none"> <li>Yes – as Elected Shipper initially, then recorded against the Registered Shipper</li> </ul>
GT (Xoserve)	<ul style="list-style-type: none"> <li>IMC creates Elected Shipper on SPR</li> <li>Confirmation File 'registers the first Shipper'</li> </ul>	<ul style="list-style-type: none"> <li>File Flow from incoming Shipper</li> </ul>	<ul style="list-style-type: none"> <li>Confirmation date</li> </ul>	<i>To Meter Installation date where Shipper responsible for meter install</i>	<ul style="list-style-type: none"> <li>Yes – as Elected Shipper initially, then recorded against the Registered Shipper</li> </ul>

### Issue

'Potential that a Shipper (B) other than the Elected Shipper (A), registers an iGT Meter Point on Xoserve systems.'

### What are the concerns?

1. Potential for iGT / Xoserve to have difference regarding the identity of the first Registered Shipper?
2. Shipper (B) may not have owned site from first install – gap in ownership on iGT / Xoserve systems
3. Shipper (B) may have incorrectly been given install data from MAM (e.g. where Suppliers use the same MAM).

### How the GT Charging regime work for new connections?

1. Charges commence from Confirmation Date – Date that the Shipper is registered against the Supply Point
2. Where asset install data provided, back bill cap/com/rec for period of meter install to confirmation
3. Where only read provided, or install as an update by Shipper, billing position will start from that read going forward.
4. Where the period of ownership pre Confirmation date is unknown (i.e. only read submitted or install sent as update) GT charges are not recovered from a specific Shipper

### Mitigation

1. Where Xoserve become aware of metering activity from any organisation (iGT/MAM etc), this will trigger the Auto confirmation of the Elected Shipper.
2. Develop reports profiling the differences between Elected and initial Registered Shipper